



Trull C of E VA Primary School

Telephone Number: 01823 333239

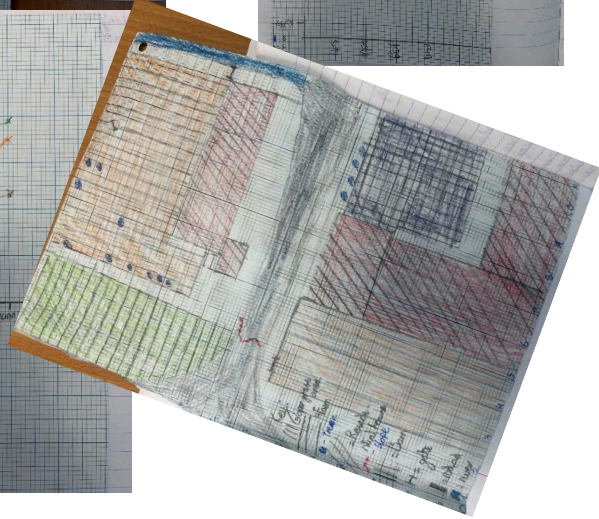
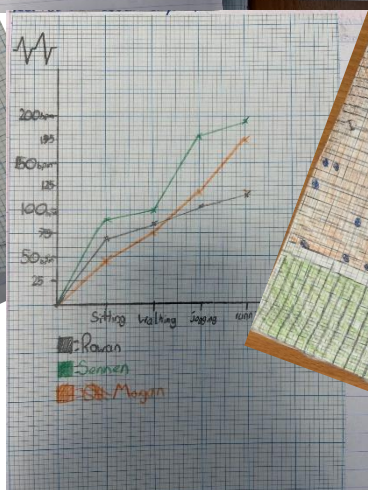
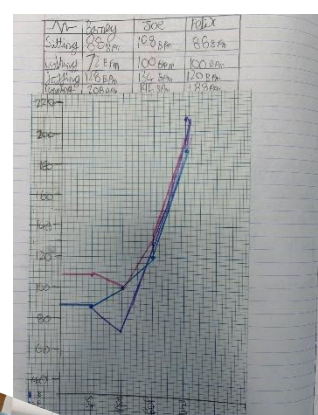
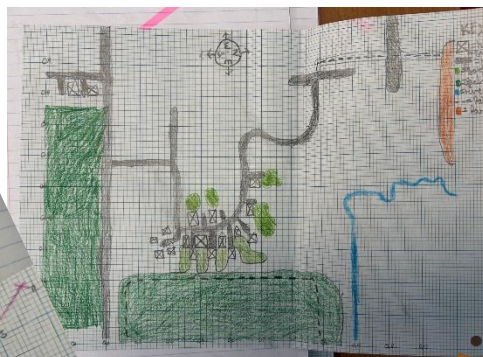
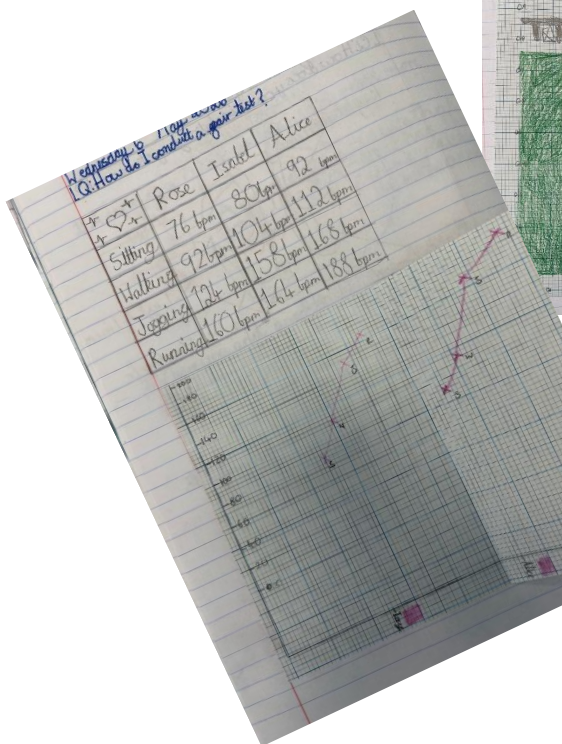
Office email: Office.Mailbox@TrullSchool.co.uk



*I have come that they may have life,
and have it to the full.
John 10:10*

Yew Class News

This week, Yew Class have been busy getting stuck into our afternoon topics as well as doing a bit of revision for our upcoming tests next week. We have been learning about maps in geography and we spent a lesson looking at different map types (atlases, paper maps and electronic maps) and how they differ. The children were then challenged to make their own map of where they live, designing a key and including all the important landmarks. We have also been conducting experiments in science. This week we looked at the circulatory system and how our heart and blood supply us with oxygen. We then tested each other's heart rate when sitting, walking, jogging and running to see how it changed. We decided there might have been some anomalies or we have a class of super humans.





Rowan Class did an incredible job this morning at their Assembly, shared with the rest of the school and their parents. They showcased their brass knowledge and skills, giving some facts about trumpets, cornets, trombones and baritones. They shared lots of songs with their audience, including We Will Rock You with some audience participation! Rowan Class are very grateful to Mr Bowen for his weekly teaching and for supporting their Assembly. Thank you to all the parents who came along to watch and cheer them on!



Last week in Forest Church we shared the story of The Ascension. We spent time thinking about remembering how Jesus is always with us , even when we can't see him.

We planted forget-me-not seeds in the forest school area and thought about something or someone that we want to remember.



Our Forest Church prayer this week:

Dear God,
Thank you for Jesus.
Thank you that even when we cannot see him, he is
always with us. Help us to remember him in our hearts.
Amen



Forest Church



Dear Community Member

Trull Parish Council are currently running an early-stage consultation that involves the green spaces and road layouts connecting us to Orchard Grove.

Later this year, plans will be released for the "Eastern Neighbourhood" - the part of the Orchard Grove development closest to Trull. We currently only have a "skeleton plan," which means it's the perfect time for us to have a say.

Planning would like our early thoughts on how the road layout and the new roundabout connecting the Honiton Road to the spine road might include things that benefit the village.

Note: Parish Council draft drawing of plans



Why give feedback now?

Our input will go directly into the design brief *before* the official plans are finished this summer.

You can read more, see the presentation, and answer a questionnaire at this link: <https://trullparishcouncil.org.uk/news/your-village-your-voice-shaping-the-orchard-grove-connection>

We have also put hard copies of the presentation, with pages to comment in the following locations:

- The Winchester Arms
- The Hive
- Just Hair
- Gatchell Oaks
- Cllr Jo Wooldridge has a copy on Church Road which she will be socialising and Councillors will be going door to door in the immediate area.

If you would like any clarification on the current planning suggestions, you are welcome to contact the Clerk (Clerk@trullpc.org.uk) and we will do our best to answer questions.

Kindest regards

Trull Parish Council

CAR PARK – FRIDAY 15th MAY

Please be aware that there is a wedding taking place next Friday afternoon at the Church. We are expecting the car park to be very busy so please either walk or park elsewhere but be considerate of our neighbours. Thank you.

Summer Term – Important dates

May

Mon 11 th	SATs Week
Tues 12 th	Y4 trip to Wessex Water
Fri 15 th	Y5 & Y6 to Matilda at Queens College
Mon 18 th	Y3 Kingfisher Award trip
Tues 19 th	Y4 Kingfisher Award trip
Thurs 21 st	Tempest – Class photos and year 6 leavers photos
Fri 22 nd	Willow Class Assembly
Mon 25 th – Fri 29 th	HALF TERM

ATTENDANCE

The classes with the best attendance this week are:

Beech & Willow

June

Fri 19 th	Beech Class Assembly
Wed 24 th	Parent Book Look (more info to follow)
Thurs 25 th	Sports Day (more info to follow)
Fri 26 th	INSET DAY

HELP US WIN £1,000 FOR OUR LIBRARY

Nominate us and you could win a £100 gift card!
[nationalbooktokens.com/schools-prize](https://www.nationalbooktokens.com/schools-prize)

NATIONAL BOOK tokens

In association with

Read for Good

GO ALL IN.

#rebuildthelibrary

National Year of Reading 2028

The poster features a QR code and a photograph of a young girl reading a book. The background is yellow and orange with decorative elements like stars and a book icon.

Five schools will win £1,000 in National Book Tokens.

To be in with a chance, we need to be nominated. Anyone can do this: parents, grandparents, friends, your community. The more nominations we get, the higher the chances to win a prize. By nominating, you will also go into a prize draw to win a £100 gift card.

To nominate us, please scan the QR code or follow this link:
https://www.nationalbooktokens.com/schools-prize?utm_medium=email&utm_source=nbt&utm_campaign=20260505-schools-list&utm_content=schools-prize

We take child protection extremely seriously at our school. If you have a concern, you can speak to any of the school's designated and trained Child Protection officers: Miss Grammer, Mrs Cerullo, Mr Bottomley or Mrs Crudge. Alternatively, you can ring Childrens Social Care on: 0300 123 2224 or Email childrens@somerset.gov.uk

At The National College, our WakeUpWednesday guides empower and equip parents, carers and educators with the confidence and practical skills to be able to have informed and age-appropriate conversations with children about online safety, mental health and wellbeing, and climate change. Formerly delivered by National Online Safety, these guides now address wider topics and themes. For further guides, hints and tips, please visit nationalcollege.com.

What Parents & Educators Need to Know about STREAMING SERVICES

Streaming services are platforms that allow users to watch cartoons, documentaries and movies online immediately (often referred to as SVoD: streaming videos on demand). Ofcom reported that children and young adults prefer streaming services to traditional TV. With two-thirds of UK households subscribing to at least one streaming service, parents must understand how to manage screen time, set age restrictions and ensure safe viewing.

WHAT ARE THE RISKS?

COSTLY

Subscription services can be costly. As the main source of entertainment, most households have at least one streaming platform, and each platform has its own monthly subscription fee. Services are charging more for ad-free viewing, and better quality and resolution; however, there is a cheaper option with adverts. Due to price increases, Netflix and Disney+ reported a sharp increase in users subscribing to their ad-supported tier in 2025.

ILLEGAL STREAMING

Sharing passwords or using modified Fire Sticks to access streaming content without permission is illegal. Most streaming services have now put measures in place to detect account sharing. When account sharing is identified, platforms will offer an opportunity to pay for an added member or will ask the user to verify who they are.

AGE-INAPPROPRIATE CONTENT

Most streaming platforms allow users to set up a profile for each family member, with the option of putting specific restrictions in place. These include adding a profile lock or PIN, controlling autoplay of previews and next episodes, and limiting content based on age ratings. Nonetheless, these restrictions aren't foolproof. Content which is rated as suitable for an age group may still include themes, language, or images which children and families find inappropriate.

EXCESSIVE SCREEN TIME

Excessive screen time contributes to sedentary behaviour and can negatively impact physical and mental health. Ofcom found that 4- to 15-year-olds averaged 2.5 hours per day across all video-sharing platforms, not including gaming. The vast range of content available, combined with features such as autoplay, makes it easy for children to watch for extended periods of time.

BINGE WATCHING

Features such as autoplay make it easy for viewers – especially young people – to continue watching episodes without a break. This can foster unhealthy and addictive patterns, such as consuming a vast amount of content in one sitting. With binge watching come a lack of social interaction, lack of physical exercise, and often late nights and sleep disruptions which impact their mental and physical wellbeing.

HARMFUL STEREOTYPES

Many platforms track viewing habits, time consumed, and preferences, and generate recommendations to encourage your child to keep watching. This results in your child being in a 'loop' whereby they think the 'recommended' shows would be something they would enjoy rather than thinking critically for themselves. This can shape their beliefs, values, and understanding of the world from a young age without even realising it.

Advice for Parents & Educators

SET UP INDIVIDUAL PROFILES AND ADD PINS

Almost all streaming services allow users to set up individual profiles where each family member can have age restrictions put in place for the content they can view. Adult profiles can be protected through the use of PIN. Keep this private. Use the options of putting specific restrictions in place such as controlling autoplay of previews and next episodes, and limiting content based on age ratings.

TALK ABOUT ALGORITHMS

Talk to your child about how streaming services track what they watch, and base adverts and recommended shows/movies on previous viewing. Encourage them to critically think about whether the recommendations are suitable and how they want to spend their time. Discuss stereotypes with your child and challenge them to think about what they watch and how this may influence their beliefs.

MONITOR AND TALK OFTEN

Discuss with your child what they are watching, find out which programmes are trending, and watch them yourself. Have a little look at their watch history to check the content of what they're watching. Some platforms have been known to recommend or autoplay older or graphic content after a child's movie has been played. While some TV shows or movies may have a suitable age rating, your child may still find the content scary, or it may explore themes you don't want to explore with your child yet.

SET TIME RESTRICTIONS

Many streaming services offer the opportunity to buy movies, or add additional features to your subscription such as sports channels, as well as play games. This can increase the amount of time young people spend sitting idly in front of the screen. Some platforms (e.g. Apple TV+) allow you to set screen time restrictions. If the streaming service doesn't allow you to set screen time limits, set a family rule and stick to it.

Meet Our Expert

Dr Claire Sutherland is an online safety consultant, educator, and researcher who has developed and implemented anti-bullying and cyber safety policies for schools. She has written various academic papers and carried out research for the Australian Government, comparing internet use and sexting behaviour of young people in the UK, USA and Australia.



See full reference list on our website



Users of this guide do so at their own discretion. No liability is entered into. Current as of the date of release: 11.03.2026

**MULTI-SPORT
ACTIVITY CAMP**

NOW AVAILABLE FOR YEAR 2 CHILDREN TO ATTEND!



DODGEBALL

HALF TERM HOLIDAYS
Tuesday 26th May 2026

SUMMER HOLIDAYS
Thursday 23rd July 2026
Friday 24th July 2026
Monday 27th July 2026

08:30 – 16:00

£25 per day

Trull C of E VA Primary School
Head Coach: Mrs. Mitchell
Assistant Coach: Mrs. Andrews

OPEN TO CURRENT YEAR 2-YEAR 6 CHILDREN

* max 24 children per day, minimum of 15 for club to run.

the Trull PLAYERS
presents

Pantastic
performed by Trull Players Juniors

followed by

Outside the Box
performed by Trull Players not so Juniors

Trull Memorial Hall
Saturday 16th May, 2.30pm or 7pm

Tickets available from Monday 6th April via www.trullplayers.org.uk

TRULL KARATE SCHOOL

Register your child for our Kids Karate program
Fridays 4:30pm and 5:05pm-6:05pm.
Venue: Trull Memorial Hall TA3 7JZ

- Focus and Respect
- Team Work and Achievements
- Character Building
- Self-Awareness
- Coordination
- Agility and Balance

Tania or Matt 07875599715

First class free

Trull School Fundraiser's Event

LIVE MUSIC & HOG ROAST

SNAPPA

SAT 13 JUNE 26
7.30-11.30pm
Trull Memorial Hall

Tickets £25
Early Bird Tickets £22.50
Purchase before 2 May 2026

GET YOUR TICKETS NOW

18+ Adults Only

Please note we are unable to offer refunds for this event and transfers are subject to approval from the TSF

TSF@TrullSchool.co.uk

BLAGDON HILL



Summer FETE

AND DOG SHOW



SATURDAY 30th MAY

STARTING AT 2pm

FUN DOG SHOW



SATURDAY 30th MAY 2026

AT THE ANNUAL SUMMER FETE
at Minster & Angersleigh Playing Field, Sealds Green

BLAGDON HILL, TAUNTON

(The Playing Field is on the right as you enter Blagdon Hill from the direction of Taunton)

STARTS AT 2.15 PM

SHOW CLASSES

1. Best Dog/Child Handler Combination (for children 12 years and under)
2. Most Obedient Dog (any age)
3. The Dog Most Like Its Handler
4. Prettiest Bitch
5. Most Handsome Dog
6. The Dog with the Waggiest Tail

Entry Fee: £3.00 per dog per class
Rosettes to 4th place in all classes



Family service

Sunday 10th May

With refreshments from 10.15am in the Trull Church Community Centre

We sing, pray, learn about God, and have fun together!
We do this in a variety of ways including games, craft and interactive stories.

This is a noisy and beautiful service, where all ages worship God together.



Scan the QR code for more information!



MAY HALF TERM
TECH HOLIDAY CAMP
 JOIN THE UK'S COOLEST TECH CAMP!

ROBOTS INVENTIONS TECH FUN

Taunton School, TA2 6LH
 26th - 29th May 2026
 AGES 5-11, 9 AM - 4 PM DAILY
www.nextthing.education

STANDARD CHILDREN'S CHILDREN'S TAX-FREE VOUCHERS

Ofsted Registered

MAY HALF TERM CAMP
 26TH - 29TH MAY 2026
 ACTIVITIES THEY'LL LOVE!

MOVIE MAKING MINECRAFT REDSTONE CIRCUITRY ENGINEERING
 ROBOTICS & CODING 3D CREATIONS VR LAZER TAC

"The best camp we've tried: A perfect mix of fun and learning!"
 ★★★★★

"My child loved every minute - already asking to come back!"
 ★★★★★

WHAT TO EXPECT:
 At Next Thing Education, our goal is to ignite curiosity, fuel creativity, and empower young minds for the future! Through hands-on coding & STEM experiences, we inspire the next generation of inventors, creators, and tech leaders. Led by DBS checked, friendly and supportive instructors, kids will explore STEM through exciting activities and challenges.

FAST BOOKING

£45 PER DAY or **4 DAYS FOR JUST £162!**
 CHILDCARE VOUCHERS OR TAX FREE CHILDCARE ACCEPTED
LIMITED SPACES, BOOK NOW!
 E: info@nextthing.education T: 01442 873150

Wimbleball Lake COUNTRYSIDE FAIR
 Brompton Regis, Dulverton TA22 9NU
 Sunday 17 May 2026
 11am to 4pm

craft & trade stalls • food and drink • nature trail
 classic cars • watersports

Part of Exnour Nature Festival 2026

Free entry and free parking

Scan me to find out more!

01566 771930
wlakestrust.org.uk
 #MyYourOutdoors

County Gazette since 1836

Help Your Local School WIN EQUIPMENT!

Get ready to participate in our exciting token collect competition and help your school stand a chance to win amazing prizes.

Collecting Tokens Here
 Drop your tokens to reception!

Collect tokens printed in the County Gazette from Monday 11th May until Friday 3rd July 2026.

Terms and Conditions: Newsquest terms and conditions apply. Visit Newsquest Prize Competition Rules and Newsquest Privacy Policy for more information. No Photocopies Accepted: Only original tokens will be counted. Only registered schools can enter, and no two schools can combine their token collections. Prizes are non-transferable and no cash alternative is available.