

---

## PUNCTUALITY

Arriving on time is a great start to the day, putting your child in the right frame of mind to make the most of the day's learning. Good punctuality is linked to good attendance which we know leads to better outcomes for children and young people.

### **Arriving on time:**

Sets good habits for adult working life.

Maximises educational achievement.

Helps your child develop friendships and relationships.

Boosts your child's confidence and self-esteem.

### **Arriving late, however:**

Puts your child at an immediate disadvantage to other pupils who have arrived on time.

Means your child misses important information at the start of lessons.

Is embarrassing for your child.

Disrupts lessons for the other children.

Can damage your child's confidence and self-esteem.

## THE SCHOOL DAY

8.35am- Gates open

8.40am- Doors open

**8.45am- The school day starts**

12.30-1.30pm- Lunchtime

**3.15pm- End of the school day**



---

## ILLNESS

Being ill may prevent your child from coming to school, but, if they can get out of bed and play or enjoy TV, they should be in school.

A slight cough and a sneeze are not an excuse to miss school and feeling tired is not an illness.

Looking after your child is very important to us and we will of course contact you if we feel they should be at home.

If your child's attendance falls below 90% due to illness, medical evidence may be asked to be provided to support the reason for absence. This includes proof of medical appointments. If this is not provided when requested, they will be classed as unauthorised.

At Trull Church of England VA Primary School, the DfE states and the Governing Body support, that the following will apply:

**Extended leave of more than 20 unauthorised school days could result in the loss of a school place.**

As a parent you can support your child to enjoy school life to the full by ensuring they attend school every day **AND** are on time.



---

## ATTENDANCE AT TRULL SCHOOL

---



**“Good Habits  
last a lifetime”**

**TRULL CHURCH OF ENGLAND VA  
PRIMARY SCHOOL**

Church road,

Trull, TA37JZ,

Taunton Somerset





We take attendance very seriously at Trull Church of England VA Primary School as there is very clear evidence that taking your child out of school during term time can and does have an impact on your child's academic progress and later successes.

Regular attendance and punctuality prepare your child for the world of work, where good attendance and punctuality are required.

Regular attendance at school improves your child's social skills and supports development of friendships and relationships.

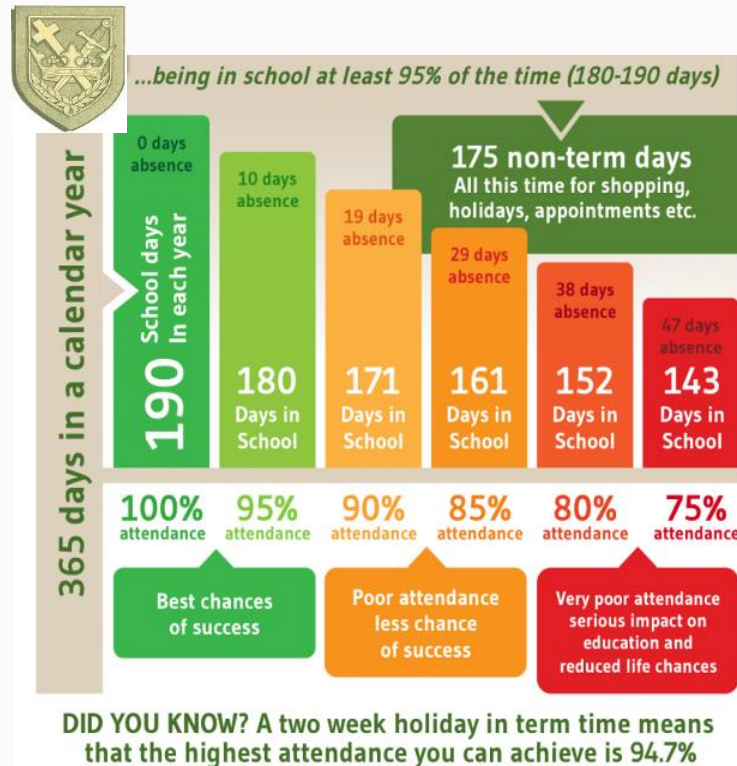
Here at Trull, our attendance target is 97% attendance, although we strive for 100% attendance for all pupils. Any pupil with attendance below 97% is a concern to us.

New government guidelines state that attendance figures of 90% or less is classified as 'persistent absence'

We will inform you termly of your child's attendance figures and also write to you if your child's attendance is a concern.

## REQUEST FOR LEAVE

We consider every application for leave, individually; but please note that our policy is to **not** grant any leave other than in the most exceptional circumstances.



With school holidays, non-pupil days and weekends you have at least 175 days to take holidays, visit the dentist or have routine appointments.

Secondary schools do look at attendance levels when offering places on appeal, in particular, the rates of 'unauthorised absence'.

An application must be made in writing, on the blue form found in the entrance hall, with appropriate evidence, at least 2 weeks in advance of any intended absence by the parent/carer with whom the child normally resides.

If you are the child's parent but you do not normally live with the child, you must seek the consent of the parent/carer with whom the child lives and evidence this when making the request.

## PENALTY NOTICES

A penalty notice which may result in a fine of £60 -per parent, for each child, may be issued if the leave is not agreed or the child does not return on the agreed date.

In the case of a non-payment, the case may be referred to Court which could result in a criminal record and fines up to £2500 and/or 3 months imprisonment. In exceptional circumstances, penalty notices may not be issued and cases may be taken straight to Court.

Children Missing Education enquiries may be made regarding the child's whereabouts if they do not return on the agreed date. This may result in the child being deleted from the school roll.